

# TRESTON

DEDICATED TO HUMAN WORKSPACE



# TRESTON PACKING SOLUTIONS

FROM AN ALL-IN-ONE PACKING TABLE TO A COMPLETE PACKAGING SOLUTION



## Why invest in a packing bench?

Are you looking for an easy packing bench option or a packaging solution which can answer varying needs and is highly adjustable? Treston packing bench options can answer both these needs. In addition to benches, Treston can also offer matching trolleys, cabinets, lights, chairs and more to complete a fully functional workstation.

An ergonomic workstation, where everything is in its place, enables faster and more accurate packing, improves safety, makes it easier to switch between packing personnel and creates a clean and less-stressful atmosphere. Improved efficiency makes larger volumes and more revenue opportunities possible.

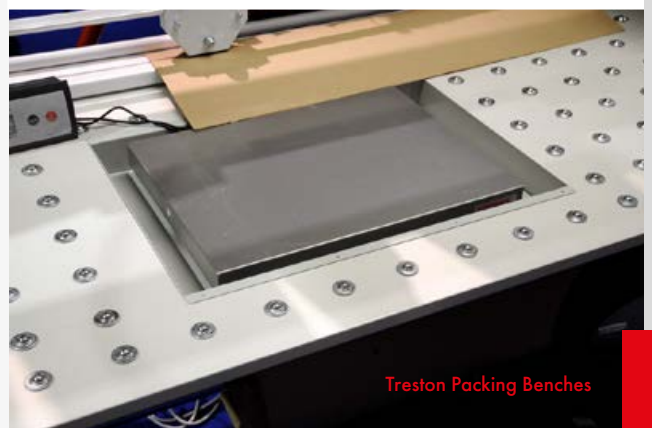
- ✓ **Improve efficiency, accuracy and safety**
- ✓ **Make it easy to switch between packing personnel**
- ✓ **Create a clean and less-stressful environment, thus energizing packing personnel**
- ✓ **Enable larger volumes and more revenue opportunities**

## WHY CHOOSE TRESTON?

- ✓ **Functional quality**
- ✓ **Full service, expertise and experience**
- ✓ **Solutions for the entire environment**

For over 40 years, Treston has designed and manufactured high quality industrial furniture which is functional and efficient, tailor-made for the person performing the job. No matter if you choose an out-of-the-box solution or a tailor-made solution, the design always has ergonomics and efficiency aspects in mind.

Our skillful staff has worked with over 500,000 deliveries world-wide. Whether you need space planning, 5S integration, prototypes, installation or training services – we are here for you. With an unmatched track record of projects, no matter how big or small we can help you choose just the right solution for your needs.





# Treston Packing Bench TPB

is a well thought-out, safe and easy all-in-one choice

- ✓ Safe, economic and ergonomic all-in-one choice
- ✓ Adapts and grows according to needs
- ✓ 50+ accessories and add-on products available
- ✓ One flat pack contains all the basic equipment
- ✓ Easy to buy, transport and assemble

This packing table adapts and grows according to your needs. You don't need to know what your business will look like in two years' time, as you can add and remove accessories as you go. Start small and add from over 50 accessories based on your needs. TPB comes in one flat pack and is easy to assemble. Perfect packing table option for cost-conscious users.

Carefully selected materials, high-quality finishing, epoxy powdercoated steel parts RAL 7035. Laminate bench top, 25 mm low-pressure laminate.

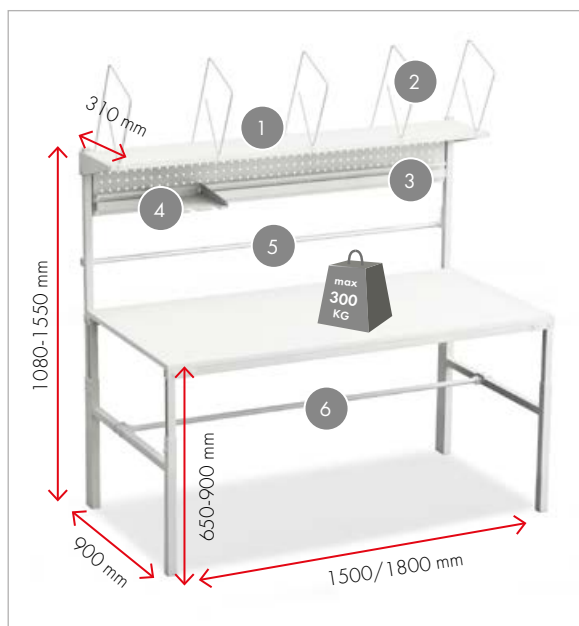


## Packing bench TPB

Size W x D mm	Max load kg	Code
900 x 1500 x 650-900	300	TPB915
900 x 1800 x 650-900	300	TPB918

## Packing bench TPB915/TPB918 includes:

Name	Description	Code TPB915	Code TPB918
1. Height adjustable upper steel shelf	Size 310 x 1500/1800 mm. Max load 30 kg. Fixing positions for Treston lighting units under the shelf.	SS150	SS180
2. Adjustable divider hoops	Five adjustable divider hoops (height 400 mm).	PDH	PDH
3. Height adjustable steel perforated panel with bin rail	Size of the panel 1419/1719 x 255 mm. For auxiliary steel shelves and stacking bins. Max load 20 kg.	PP150	PP180
4. Auxiliary steel shelf	Size 217 x 298 x 20 mm, for A4 paper and tape dispensers (max 2 pcs per shelf). Max load 3 kg.	ASSA4	ASSA4
5. Upper paper roll holder	Height adjustable. Axle diameter 25 mm. Max roll width 1400/1700 mm. Max load 40 kg.	PRH ROLL150	PRH ROLL180
6. Lower paper roll holder	Simply hangs on horizontal bars of legs. Depth adjustable. Axle diameter 25 mm. Max roll width 1350/1650 mm. Max load 40 kg.	PRHL ROLL150	PRHL ROLL180



# TPB accessories



See additional accessories, lighting units, paper roll holders and cutters on pages 9-11.

Name	Description	Size W x D x H mm	Code
<b>1. Lower steel shelf</b>	Hangs on horizontal bars. Max load 30 kg.	1418 x 460 1718 x 460	LSS150 LSS180
<b>2. Low M-divider hoops</b>	Steplessly adjustable. 4 pcs per set. M-shape (the lowest point 105 mm from shelf).	460 x 315	LDH
<b>3. Recycling material bin</b>	60 ltr bin with steel brackets. Can be positioned on either side. Max load 15 kg.	530 x 280 x 585	PRMB
<b>4. Swivel arm</b>	With lockable, angle adjustable steel tray. Max load 15 kg.	460 x 210	CKV400
<b>5. PC stand</b>	An adjustable holder for either a vertical or horizontal CPU, to mount underneath the bench top.	Vert. 130-140 x 395-500 Horiz. 340-460 x 180-285	CPU
<b>6. LCD swivel arm</b>	The quick-release mechanism is equipped with a standard flat-screen mount 75 x 75 mm and 100 x 100 mm. The arm is double articulated and turns through a radius of 180°. Extends between 95-425 mm from the upright. Max load 10 kg.		MA
<b>Adapter</b>	The adapter is needed for fixing MH/MA/MA2 arms to the TPB C-profiles.		AS2
<b>7. Tool and lighting support</b>	For suspending power tools and lighting units. Includes one C-profile bar with sliding hook.	1500 x 600 1800 x 600	KT150 KT180
<b>8. Side worktop</b>	Easy to fix to the legs of the bench. Can be fixed on the left or right side of the bench and brackets placed either above or underneath. Height adjustable 575-900 mm from floor. Max load 35 kg.	400 x 900	TP904ST
<b>9. Auxiliary steel shelf*</b>	Shelf for A4 paper and tape dispensers (max 2 pcs per shelf). Mounted on bin profile. Max load 3 kg.	217 x 298 x 20	ASSA4
<b>10. Divider hoops set *</b>	Adjustable divider hoops for shelf of depth 310 mm. 5 pcs per set.	Height 400	PDH
<b>11. Aluminium bin rail</b>	For auxiliary steel shelf (ASSA4), stacking and picking bins. Max. load 15 kg	1419 x 35 x 75 1719 x 35 x 75	BP150 BP180
<b>12. Pull-out steel shelf for printer</b>	Mounting under the bench top. Free space for printer 400 x 500 x 415 mm. Pull-out extent 500 mm. Max load 35 kg.	500 x 510 x 515	PSP50
<b>Extra high upright profiles</b>	If you need more space for uprights. 400 mm taller than standard one.	Height 1470	HKCP147
<b>Cable clip set</b>	5 pcs. The cable clip set will hold cables, etc. securely and neatly in place along the bench frame.		CC12

\*Included in the TPB packing bench; also available as an accessory.

# Treston Concept bench

accommodates the most demanding needs



- ✓ For all packaging needs, no need for compromises!
- ✓ Wide variety of modules, options and variations
- ✓ Largest number of accessories on the market
- ✓ Sturdy, stable, high-quality

You can choose from various table top material options, sizes and lengths; allen key, hand crank or motor adjustable bench frames; racks for holding bins, cutters, rolls, and more; an endless number of modules and accessories including cutters, tape dispensers, PC stands and more.

Whatever the variation you need, you can build it from Concept and its modular elements. Modules fit together seamlessly, giving you an opportunity to create a complete packaging solution, perfectly matching your needs. Building packaging combinations from varying, yet standard modules makes it possible to create an ergonomically well-functioning packaging solution which is also robust and economic. No need for costly extra modifications or compromises!

## Concept bench frames

Frame type	Size W x D x H mm	Max load kg	Code
Allen key adjustable	1500 x 750 x 670-1120	500	100 49 032P
Hand crank adjustable	1500 x 750 x 675-1025	200	101 49 032
Motor adjustable	1500 x 750 x 700-1100	400	103 49 032P
Allen key adjustable	1500 x 900 x 670-1120	500	100 49 064P
Hand crank adjustable	1500 x 900 x 675-1025	200	101 49 064
Motor adjustable	1500 x 900 x 700-1100	400	103 49 064P
Allen key adjustable	1800 x 750 x 670-1120	500	100 49 033P
Hand crank adjustable	1800 x 750 x 675-1025	200	101 49 033
Motor adjustable	1800 x 750 x 700-1100	400	103 49 033P
Allen key adjustable	1800 x 900 x 670-1120	500	100 49 065P
Hand crank adjustable	1800 x 900 x 675-1025	200	101 49 065
Motor adjustable	1800 x 900 x 700-1100	400	103 49 065P
Accessory bar 1500 *	1340 x 40 x 80		860 088-49
Accessory bar 1800 *	1560 x 40 x 80		860 089-49
Castor set	Ø100		834 734-00

\*Depth adjustable (150 mm) accessory bar to allen key adjustable benches for CPU-holder etc. The bar is included with hand crank and motor adjustable benches.

## Concept bench tops

Bench top material	Size W x D mm	Code
High pressure laminate	1500 x 750	TT15075-HPL
High pressure laminate	1500 x 900	TT15090-HPL
High pressure laminate	1806 x 750	TT18075-HPL
High pressure laminate	1806 x 900	TT18090-HPL
High pressure laminate	2000 x 750	TT20075-HPL
High pressure laminate	2000 x 900	TT20090-HPL
Low pressure laminate	1500 x 750	TT15075-LPL
Low pressure laminate	1500 x 900	TT15090-LPL
Low pressure laminate	1806 x 750	TT18075-LPL
Low pressure laminate	1806 x 900	TT18090-LPL
Low pressure laminate	2000 x 750	TT20075-LPL
Low pressure laminate	2000 x 900	TT20090-LPL

## Concept upright tubes

Name	Length mm	Code
Upright tube	1359	860 024-49
Upright tube	1582	860 025-49
Upright tube module 2 x M750	1359	903 49 001P
Upright tube module 2 x M750	1582	903 49 002P
Upright tube module 2 x M900	1359	904 49 001P
Upright tube module 2 x M900	1582	904 49 002P

Accessories are attached to the Concept bench with the aid of upright tubes or a pre-assembled upright tube module.

# Concept accessories

See additional accessories, lighting units, paper roll holders and cutters on pages 9-11.



Cable cover, TTS-shelf



Shelf for packing material SPM



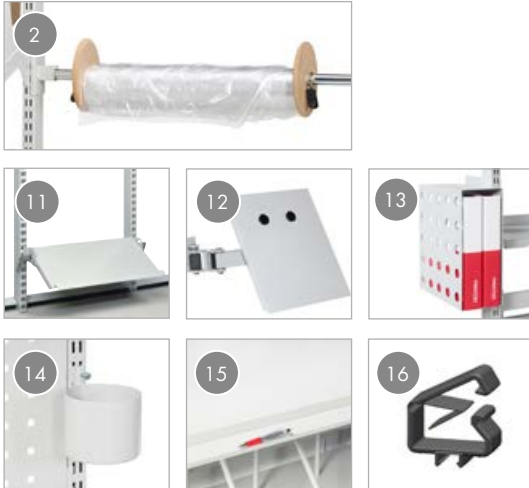
Fastening parts for SPM-shelf

Name	Description	Size W x D x H mm	Suitability / module	Code
1. Light and balancer rail	Luminaires are fitted to light/balancer rails which are height and depth adjustable. Max load 15 kg.	1500	2 x M750	918 49 006P
		1800	2 x M900	918 49 008P
2. Tiltable top shelf TTS	Tiltable steel shelf with front lip. Max tilt 12,5°. Front lip height 30 mm. Can also be installed at the back of the shelf. Can be equipped with PDH400 dividers and CCM-cable cover. Fixing points for TNL-lighting units. Max load 80 kg.	717 x 400 x 32	M750	TSM7504-49
		870 x 400 x 32	M900	TSM9004-49
		1467 x 400 x 32	M1500	TSM15004-49
		1773 x 400 x 32	M1800	TSM18004-49
3. Divider hoops set (4 pcs), TTS-shelf	Adjustable divider hoop set for the TTS-shelves of depth 400 mm. Can be tightened under the shelf with the screws.	8 x 400 x 400	TTS-shelves depth 400	PDH400-49
4. Cable cover, TTS-shelf	With cable cover, you can conveniently hide the cables under the shelf. The cover is 125 mm deep and it covers whole shelf. Suitable for TTS-shelf.	612 x 125 x 19	M750	CCM750-49
		815 x 125 x 19	M900	CCM900-49
		1362 x 125 x 19	M1500	CCM1500-49
		1666 x 125 x 19	M1800	CCM1800-49
5. Shelf for packing material SPM	600 mm deep shelf for many purposes. The shelf does not include fastening parts. Fastening parts are ordered separately from the following options. The shelf can also be equipped with PDH600 divider hoops. Max load 60 kg.	467 x 600 x 32	M500	SPM500-49
		717 x 600 x 32	M750	SPM750-49
		870 x 600 x 32	M900	SPM900-49
		1167 x 600 x 32	M1200	SPM1200-49
		1317 x 600 x 32	M1350	SPM1350-49
		1467 x 600 x 32	M1500	SPM1500-49
		1773 x 600 x 32	M1800	SPM1800-49
6. Brackets for Concept accessory bar, SPM-shelf	Fastening set for the fixed lower shelf. With fastening set you can fit SPM-shelf to the accessory bar of Concept.		SPM-shelves Concept	SPMH-49
7. Adjustable fastening set under worktop, SPM-shelf	Mounting parts for height adjustable lower shelf. SPM-shelf can be fitted under worktop with mounting parts. Free space 285-465 mm on lower shelf.	90 x 350 x 355	SPM-shelves Concept, TPB	SPMAF-49
8. Brackets for upright tube, SPM-shelf	Mounting parts for top shelf to the upright tube. With the mounting kit, you attach the SPM shelf to the upright tube.		SPM-shelves Concept	SPMBS-49
9. Divider hoops set (4 pcs), SPM-shelf	Divider hoop set for the SPM-shelves. The fixed divider is tightened with the screw at the front edge of the shelf.	8 x 400 x 280	SPM-shelves	PDH600-49
10. Adjustable auxiliary top	Ergonomic tilt adjustable tray with double arm (0-25°). Lipped edge of 15 mm. Max load 15 kg.	560 x 340		927 41 001P
11. Equipment tray	With double arm and handle. For small tools and packing accessories such as BLD20 (page 9). Max load 15 kg.	500 x 250 x 125		928 49 002P
12. Keyboard tray for LCD holder	Max load 5 kg.	480 x 260		860 941-49
13. LCD holder with double arm	Max load 15 kg.			930 49 002P
14. Pull-out steel shelf for printer	Mounting under the bench top. Free space for printer 400 x 500 x 415 mm. Pull-out extent 500 mm. Max load 35 kg.	500 x 510 x 515		PSP50



# Concept accessories

See additional accessories, lighting units, paper roll holders and cutters on pages 9-11.



Name	Description	Size W x D x H mm	Suitability / module	Code
1. Perforated panel	Fastened to the upright tubes. The size of the perforation is 9 x 9 mm, center to center 38 mm. Can be equipped with panel hooks, boxes and trays.	718 x 389	M750	861 511-49
		871 x 389	M900	861 516-49
		1474 x 389	M1500	861 526-49
		1774 x 389	M1800	861 531-49
2. Roll holder set	Roll holder set for uprights. Axle 25 mm zinc electroplated. Max load 40 kg.	635 (max roll length)	M750	890 547-49P
		785 (max roll length)	M900	890 548-49P
		1400 (max roll length)	M1500	859 041-49P
		1700 (max roll length)	M1800	859 042-49P
3. Roll holder set under worktop	Steel tube (Ø 25 mm) for storage of packing material. Comes with fixing brackets. Max roll length 1200/1500 mm. Max. load 40 kg.	1500		859 044-49P
		1800		859 045-49P
4. Aluminium bin rail	Fixed on upright tubes. For auxiliary steel shelf (page 9), stacking and picking bins. Max load 15 kg.	736 x 55 x 75	M750	BP750C
		889 x 55 x 75	M900	BP900C
		1486 x 55 x 75	M1500	BP1500C
		1792 x 55 x 75	M1800	BP1800C
5. Auxiliary top, fixed brackets	Suitable for printer, boxes, etc. Mount on upright tube. Left and right side version. Max load 40 kg.	400 x 500	Left side	926 41 001P
		400 x 500	Right side	926 41 002P
6. Printer platform slideable	Printer shelf with sliding platform for easy replacement of the label roll. Mount on upright tube. Max load 30 kg.	315 x 530		859 060-49
7. Rotating tool panel	Fixing frame with double arm. Max load 15 kg.	513 x 320		880 865-49P
8. Perforated panel for rotating tool panel		470 x 300		860 951-49
9. Tool trough M500 for rotating tool panel		470 x 150		860 952-49
10. Bin rail M500 for rotating tool panel	Aluminium bin rail for auxiliary steel shelf (page 9), stacking and picking bins.	486 x 55 x 75		BP500C
11. Document shelf	Handy steel document shelf (tilting 10-75°) for plastic bins, papers, small tools, etc. Max load 5 kg.	720 x 265	M750	860 115-49P
		870 x 265	M900	860 399-49P
12. Document holder	Steel document holder fixed on upright tube. Easily adjustable with the double arm. Max load 5 kg.	A4		928 49 008P
		A3		928 49 009P
13. PC / folder box	Fitted to upright tube. Max load 5 kg.	130 x 290 x 330		860 983-49
14. Bottle holder	Steel bottle holder for upright tube.	Ø100 mm		859 063-49
15. Tooltray	Fitted under worktop. Suitable for all motor benches and for other benches only with 900 mm deep bench tops.	1000 x 60		PTH100
16. CC cable clip set (5 pcs)	Suitable for upright tubes.			CC5



# TPB and Concept accessories



Name	Description	Size W x D x H mm	Suitability	Code
1. <b>Auxiliary steel shelf</b>	Shelf for A4 paper and tape dispensers (max 2 pcs per shelf). Mounted on bin profile. Max load 3 kg.	217 x 298 x 20	TPB, Concept	ASSA4
2. <b>Stacking bin set</b>	Four bins made of blue polypropylene (PP).	2 pcs 230 x 155 x 140 2 pcs 185 x 125 x 115	TPB, Concept	SBS4
3. <b>Tool holder box</b>	With two blue plastic bins type 3020.	400 x 300 x 150	TPB, Concept	PPH TXL
4. <b>Fixed tape dispenser</b>	Feeds tape from a roll; for a tape roll with a 76-mm socket. Includes screws to fix the dispenser to ASSA4. Max roll Ø 120 mm and width 50 mm.		TPB, Concept	FTD50
5. <b>Basic label dispenser</b>	Feeds labels from a roll, space for several rolls. Fits on ASSA4 or can be placed in a shelf or tray. Can be fixed with screws. Max roll Ø 220 mm and width 210 mm.	214 x 128 x 120	TPB, Concept	BLD20
6. <b>Paper roll dividers</b>	Keeps the packing material rolls in place. Made from MDF. For axle Ø 25 mm. Includes 2 dividers and 2 spring locks.	Ø 170 mm	TPB, Concept	RD25
7. <b>Pull-out recycling material bin</b>	Fixed under worktop with steel rails. Bin 60 ltr. Max load 15 kg.	286 x 570 x 650	TPB, Concept	PRMB3
8. <b>Utility box</b>	Mount on perforated panel. Max load 4 kg.	410 x 155 x 90	TPB, Concept	854 041-49
9. <b>Tray R47</b>	Mount on perforated panel. Max load 4 kg.	350 x 120	TPB, Concept	831 654-49
10. <b>Paper roll holder</b>	Mount on perforated panel. Max roll width 300 mm.		TPB, Concept	854 043-49
11. <b>Shelf for packing material</b>	600 mm deep shelf for many purposes. Fastening parts are ordered separately. The shelf can also be equipped with PDH600 divider hoops. Max load 60 kg.	467 x 600 x 32 717 x 600 x 32 870 x 600 x 32 1167 x 600 x 32 1317 x 600 x 32 1467 x 600 x 32 1773 x 600 x 32	M500 M750 M900 M1200 M1350 M1500 M1800	SPM500-49 SPM750-49 SPM900-49 SPM1200-49 SPM1350-49 SPM1500-49 SPM1800-49
12. <b>Adjustable fastening set under worktop</b>	Mounting parts for height adjustable lower shelf. SPM-shelf can be fitted under worktop with mounting parts. Free space 285-465 mm on lower shelf.	90 x 350 x 355	SPM-shelves Concept, TPB	SPMAF-49
13. <b>Divider hoops set SPM-shelf</b>	Divider hoop set (4 pcs) for the SPM-shelves. Height 280 mm. The fixed divider is tightened with the screw at the front edge of the shelf.	8 x 400 x 280	SPM-shelves	PDH600-49
14. <b>Outlet panel</b>	5 Schuco wall sockets, switch and 3 m cable.		TPB, Concept	PRK5
15. <b>Pull-out steel shelf for printer</b>	Mounting under the bench top. Free space for printer 400 x 500 x 415 mm. Pull-out extent 500 mm. Max load 35 kg.	500 x 510 x 515	TPB, Concept	PSP50
16. <b>Treston NaturLite LED 1200</b>	Lean aluminium body, dimmable bright light, max 3100 lx, 56 W, 4000 K, opal cover.	1180 x 120 x 50	TPB, Concept	TNL1200
17. <b>Treston NaturLite LED 900</b>	Lean aluminium body, dimmable bright light, max 2300 lx, 42 W, 4000 K, opal cover.	900 x 120 x 50	TPB, Concept	TNL900
18. <b>Treston NaturLite LED Wing 500</b>	Sidelight. Lean aluminium body, dimmable, max 800 lx, 14W, 4000 K, opal cover.	430 x 120 x 50	Concept	TNL500W

# Packing material roll stands

## ① High packing material roll stand

High stand for two rolls. The rolls are adjustable in height. Axle diameter 25 mm. Max roll Ø 800 mm. Can be equipped with extra roll holder set, castor set and cutter PPC. Max load 40 kg per roll.

Size W x D x H mm	Module	Max roll width mm	Code
1380 x 715 x 1500	M1350	1200	890 520-49P
1530 x 715 x 1500	M1500	1400	890 521-49P
1830 x 715 x 1500	M1800	1700	890 522-49P

## ② Low packing material roll stand

Low stand for one roll. The roll is adjustable in height. Axle diameter 25 mm. Max roll Ø 800 mm. Can be equipped with extra roll holder set, castor set and cutter PPC. Max load 40 kg per roll.

Size W x D x H mm	Module	Max roll width mm	Code
1380 x 715 x 1000	M1350	1200	859 103-49P
1530 x 715 x 1000	M1500	1400	859 105-49P
1830 x 715 x 1000	M1800	1700	859 108-49P

## ③ Castor set for packing material roll stands

4 swivel castors Ø 100 mm, 2 with brakes. Attached directly to the stands.

Size mm	Code
Ø 100	834 734-00

## ④ Extra roll holder set

Extra roll holder set for packing material roll stands. Including brackets. Axle diameter 25 mm, zinc electroplated. Max load 40 kg.

Module	Max roll width mm	Code
M1350	1200	859 040-49P
M1500	1400	859 041-49P
M1800	1700	859 042-49P



! Bracket pair for cutter, page 11



# Cutters

## ① Cutter PPC

The round cutting knife will slice through paper and cardboard with ease. Can be affixed to the bench top or alternatively to the upright profiles with fixing brackets PPC FB.

Size W x D x H mm	Module	Cutting width mm	Code
1350 x 130 x 200	M1350	1110	PPC135
1485 x 130 x 200	M1500	1250	PPC150
1785 x 130 x 200	M1800	1550	PPC180



## ② Fixing brackets for cutter

In order to obtain an ergonomic position, the cutters can also be affixed to the upright profiles of all the workbenches using these fixing brackets. The fixing brackets make the cutter both height and tilt adjustable, tilt 30 degrees. Cutter is ordered separately.

Suitability	Code
TPB/Concept upright profiles	PPC FB



## ③ Bracket pair for cutter

Cutter PPC can be fitted to the packing material roll stand with the bracket pair. Height adjustable. Cutter is ordered separately.

Suitability	Code
Packing material roll stands	890 511-49P







## Fully functioning packaging area

Whether you handle, wrap, pack or unpack big or small materials and items, they need to be stored, lifted, or brought via a belt conveyor system to the packing table and removed from the workstation.

To create a fully functioning packaging area, Treston's offering also includes a variety of trolleys, cabinets and shelves which are an integral part of a good packing environment. Treston packaging tables, together with industrial complementing furniture, help you maximize production and speed up the packaging process. Also, don't forget chairs and good lighting – both elements which complete a well-functioning packaging station.

All Treston furniture and both packing table designs take into account ergonomic aspects, enabling you to keep all packaging materials within easy reach. Both TPB918 and Concept are made according to the highest quality standards.

# Trolleys

Only a selection of our trolleys is presented in this brochure. Please visit our webpage for the full range.

## Low carton trolley LCT610

Trolley for large cartons. Three dividers can be assembled crosswise or lengthwise. The fourth divider is a push handle.

Frame and shelf are of epoxy powder-coated steel in grey RAL 7035. Four swivel castors (Ø 100 mm), two of which have brakes. Shelf height above the ground 160 mm.

Size W x D x H mm	Shelf size W x D mm	Code
1080 x 630 x 1020	1000 x 630	LCT610



## High carton trolley HCT410

Trolley for packing cartons. Shelves are equipped with steplessly adjustable steel M-divider hoops. Larger hoop height 540 mm, lowest point 330 mm above the shelf, smaller hoop height 315 mm, lowest point 105 mm above the shelf.

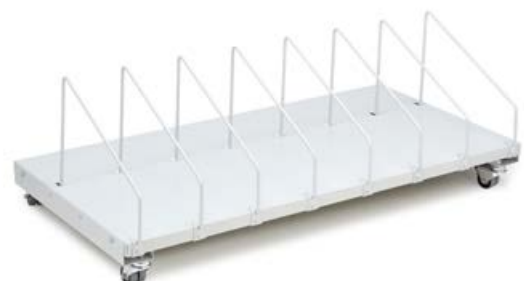
Frame and individually height adjustable shelves are of epoxy powder-coated steel in grey RAL 7035. Four swivel castors (Ø 100 mm), two of which have brakes.

Size W x D x H mm	Shelf size W x D mm	Code
1090 x 530 x 1515	1000 x 430	HCT410



## Carton trolley

Name	Description	Size W x D x H mm	Code
<b>1. Castor Set</b>	Castor set for carton trolley. The castor set gives you a trolley from the SPM-shelf.	1180 x 600 x 425	SPMCS-41
<b>2. Shelf for packing material</b>	600 mm deep shelf for many purposes. The shelf can also be equipped with PDH600 divider hoops. Max load 60 kg.	467 x 600 x 32	SPM500-49
		717 x 600 x 32	SPM750-49
		870 x 600 x 32	SPM900-49
		1167 x 600 x 32	SPM1200-49
		1317 x 600 x 32	SPM1350-49
		1467 x 600 x 32	SPM1500-49
<b>3. Divider hoops set (4 pcs), SPM-shelf</b>	Divider hoop set for the SPM-shelves. Height 280 mm. The fixed divider is tightened with the screw at the front edge of the shelf.	1773 x 600 x 32	SPM1800-49
		8 x 400 x 280	PDH600-49



## Recycling material trolley PRMT

The recycling trolleys are ideal for placing underneath or beside the packing bench. The bins are adjustable in angle for ease of use! The trolley comes with four swivel castors, two with brakes. Available in single and double version.

Size W x D x H mm	Code
350 x 625 x 765	PRMT 1
680 x 625 x 765	PRMT 2



## Multitrolley with accessories

Name	Description	Module	Size W x D x H mm	Code
1. <b>Multi trolley frame</b>	Max load 300 kg.	M750	780 x 715 x 1630	860 156-41
		M900	935 x 715 x 1630	860 157-41
2. <b>Shelf for packing material</b>	600 mm deep shelf for many purposes. The shelf can also be equipped with PDH600 divider hoops. Max load 60 kg.		717 x 600 x 32	SPM750-49
			870 x 600 x 32	SPM900-49
3. <b>Brackets for upright tube SPM</b>	Mounting parts for top shelf to the upright tube. With the mounting kit, you attach the SPM shelf to the upright tube.			SPMBS-49
4. <b>Divider hoops set SPM-shelf</b>	Divider hoop set (4 pcs) for the SPM-shelves. Height 280 mm. The fixed divider is tightened with the screw at the front edge of the shelf.		8 x 400 x 280	PDH600-49
5. <b>Aluminium bin rail</b>	For auxiliary steel shelf, stacking and picking bins. Very sturdy. Max load 15 kg.	M750	736 x 55 x 75	BP750C
		M900	889 x 55 x 75	BP900C
6. <b>Tablet bracket MY</b>	Tablet bracket for 7-10" tablets.			MY
<b>LCD bracket MH</b>	The quick-release mechanism is equipped with the standard used flat-screen mount 75 x 75 and 100 x 100 for the mounting of all normal flat screens.			MH
<b>Adapter set</b>	Adapter set for fixing LCD bracket MH to the upright tubes.		200 x 110 x 60	AS2
7. <b>Auxiliary steel shelf</b>	Shelf for A4 paper and tape dispensers (max 2 pcs per shelf). Mounted on bin profile. Max load 3 kg.		217 x 298 x 20	ASSA4
8. <b>Roll holder set</b>	Roll holder set for packing material rolls. Max load 40 kg.	M750		890 547-49P
		M900		890 548-49P
9. <b>Fixed tape dispenser</b>	Feeds tape from a roll; for a tape roll with a 76-mm socket. Includes screws to fix the dispenser to ASSA4. Max roll Ø 120 mm and width 50 mm.			FTD50
10. <b>Basic label dispenser</b>	Feeds labels from a roll, space for several rolls. Fits on ASSA4 or can be placed in a shelf or tray. Can be fixed with screws. Max roll Ø 220 mm and width 210 mm.			BLD20
11. <b>Document holder A4</b>	Steel document holder fixed on upright tube. Easily adjustable with the double arm. Max load 5 kg.			928 49 008P
12. <b>Equipment tray</b>	With double arm and handle. For small tools and packing accessories such as BLD20. Max load 15 kg.		500 x 250 x 125	928 49 002P

Please visit our webpage for full range of module M750 and M900 accessories.





# Treston packing benches

- ✓ **Sturdy and stable**
- ✓ **Modular, enabling a multitude of configurations economically**
- ✓ **Generous surface area**
- ✓ **Widest range of accessories accommodating any combinations**

Whether you have a small web shop or represent larger numbers of manufacturing, logistics centre or spare parts store, don't hesitate to contact Treston experts for service and speedy delivery.



# TRESTON



Are you looking for an easy packing bench option or a packaging solution which can answer varying needs and is highly adjustable? Treston packing bench options can answer both these needs. **CONTACT US TODAY!**

## HEADQUARTERS

Treston Oy • Sorakatu 1, FI-20730 Turku

Tel. +358 10 4469 11 • [sales@treston.com](mailto:sales@treston.com) • [treston.com](http://treston.com)

## UNITED KINGDOM

Treston Ltd • 5b Bone Lane, Newbury, Berkshire, RG14 5SH

Tel. +44 1635 521521 • [salesuk@treston.com](mailto:salesuk@treston.com) • [treston.com](http://treston.com)